



2023

# **SPECIFICATION**

**L29 LED Street Light**

# 12

YEARS EXPERIENCE OF LED INDUSTRIAL LIGHT,

L80 EXCEEDS

# 100,000

HOURS



## LEPOWER

L29 LED Street Light is a classic design in lighting market. Power ranges covered from 40W-220W

With 4mm tempered glass and high efficiency 5050 LEDs. Modular lens design provide various beam angle.



## Main Features

- High pressure die-cast aluminum alloy housing from 40W to 220W.
- Substantial friction resistant powder spraying process surface treatment.
- Adopt multi-chips package 5050 LEDs. Stable performance, flip chip technology, single unit's damage won't affect others' normal work.
- Optical lens design. Type I, II-M, III, III-S, III-M, III-L, IV-S, V optional. Uniform lighting distribution apply to different lighting projects.
- Excellent operating temperature -40~50°C
- -15~+15° adjustable bracket applicable different mounting arm.
- With excellent housing design reach IP66/IK10 rating.
- Buckle design realize tool-free maintenance.
- Automatic cut-off design.
- Dimming and smart lighting system available upon request.
- Long service life over 100,000 hours, up to 10 years warranty.
- Protection against light pollution 0 candela light emission above 90 degree from the illuminated surface.
- Stainless steel screws.
- A pressure equalizing moisture/dust filter is incorporated into the lamp structure which prevents the formation of condensate in the lamp housing.
- Protection of the light source from overheating by reducing the power consumption of the light source.
- Toolless maintenance.

# Parameters

## Electric Data

Model	LY-L29-40W-(A)-(C)-ZH-IM	LY-L29-50W-(A)-(C)-ZH-IM	LY-L29-60W-(A)-(C)-ZH-IM	LY-L29-80W-(A)-(C)-ZH-IM	LY-L29-90W-(A)-(C)-ZH-IM	LY-L29-100W-(A)-(C)-ZH-IM	LY-L29-120W-(A)-(C)-ZH-IM	LY-L29-150W-(A)-(C)-ZH-IM	LY-L29-180W-(A)-(C)-ZH-IM	LY-L29-220W-(A)-(C)-ZH-IM
Power	40W	50W	60W	80W	90W	100W	120W	150W	180W	220W
Power Efficiency	88%	88%	88%	90%	90%	90%	90%	90%	90%	90%
Power Factor	>0.95									
Power Supply	INVENTRONICS / MOSO / MEANWELL					DALI/ DALI 2/ 1-10V				
Surge Protection	5kV line-line, 10kV line-earth, 6kV line-earth									
Working Voltage	AC90-305V 50/60Hz									
Protection Class	EN- 60598 I or II (optional)									

## Photometric Specifications

LEDs	5050 LED									
CRI	>70,>80 (optional)									
Luminous Efficiency	140-160lm/w									
LEDs Qty	24pc	36pcs	36pcs	48pcs	72pcs	72pcs	72pcs	90pcs	120pcs	120pcs
Luminous Flux(±5%)	6000lm	7500lm	9000lm	12000lm	13500lm	15000lm	18000lm	22500lm	27000lm	33000lm
CCT	3000K/4000K/5000K/6000K									
Beam angle	Type I,II-M,III, III-S,III-M,III-L,IV-S,V									
MacAdam	5									
Lens Material	PC / PMMA (optional)									

## Mechanical Specifications

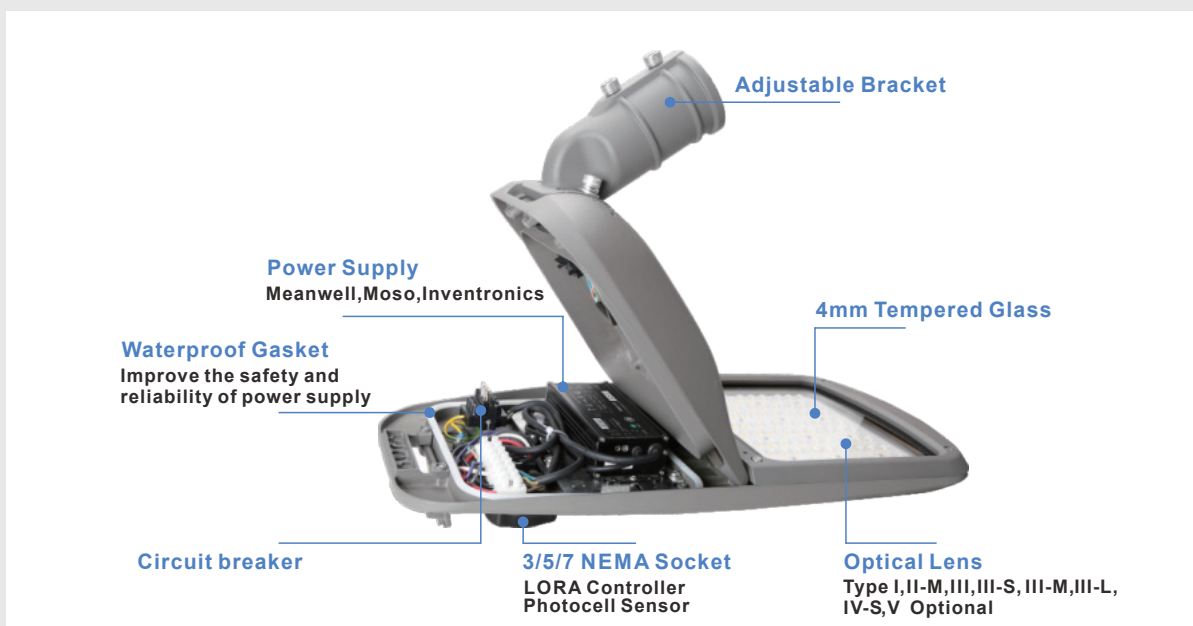
Inclination Angle	-15°~+15°and -20°~ +20° available on request (with additional adapter)		
IP/IK Rate	IP66/IK10		
Lifespan	>100,000 Hours		
Lamp Pole	>Ø60mm		
Housing Material	ADC#12		
Body Color	RAL 9006 , RAL 9005, RAL 7035 (other colors available on request)		
N.W.(KG)	4.60	6.20	8.90
Light size (mm)	606x231x122	699x279x122	814x346x128
Working Temperature	-40°C~50°C, 20%~90% RH		
Storage Temperature	-45°C~55°C, 10%~90% RH		
Certificates/Test	ISO9001, ISO14001, ETL, CE, CB, ROHS, IP66 IK10, LM80 , ENEC, Zhaga-D4i certification, shock and vibration test		



## External Design Features



## Internal Design Features



## External Details



# Product Details



## LED Chip

Use customized chip from TOP 5 LED chip manufacturer, delivering high luminous efficiency up to 200lm/w.



## Lens

Type I,II,II-S,II-M,III,III-M,IV,V optional.



## Driver Box

IP66 cabinet design with silicon ring, improving driver's service life.



## Smooth back



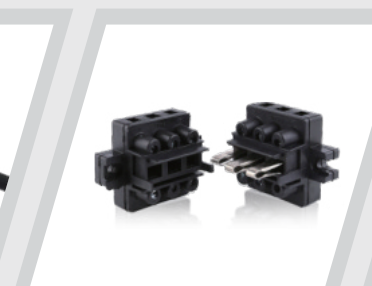
## Easy maintenance



## IP66/IK10



Dual lightning protection Driver  
10KV+SPD 10KV



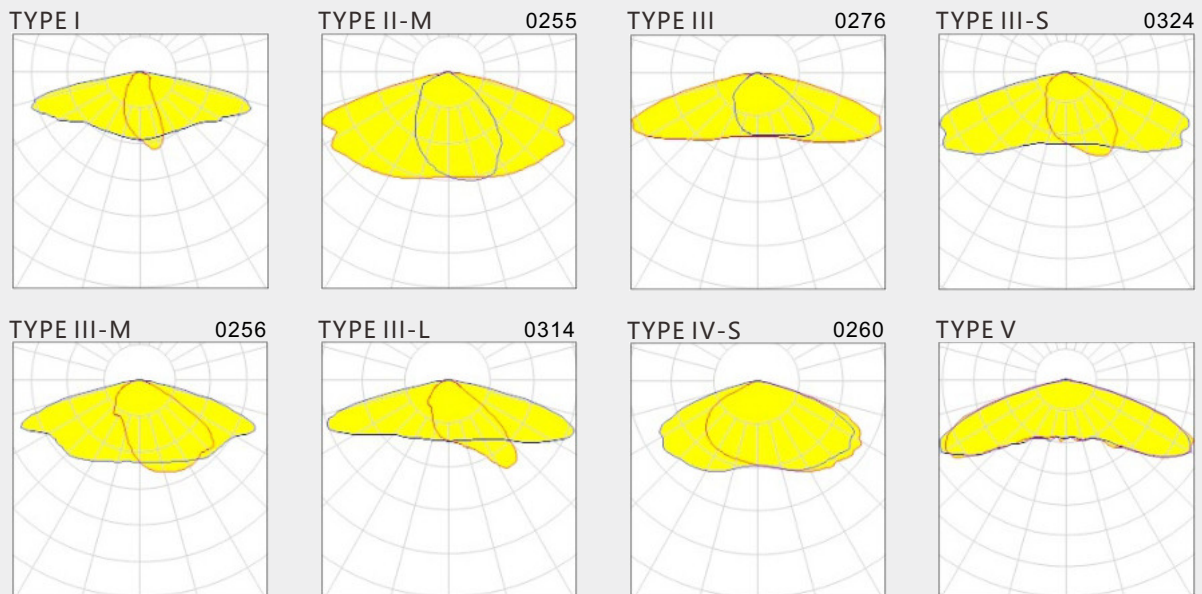
Automatic disconnection of the power supply



Photocell sensor  
Lora controller  
Zhaga connector can be added



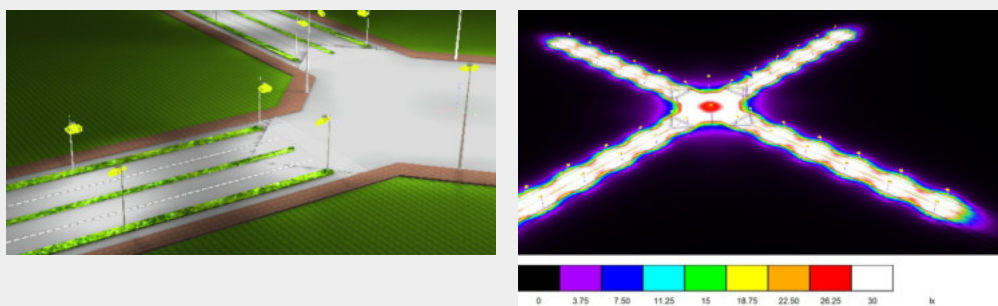
# Distribution Curve



# Case Study

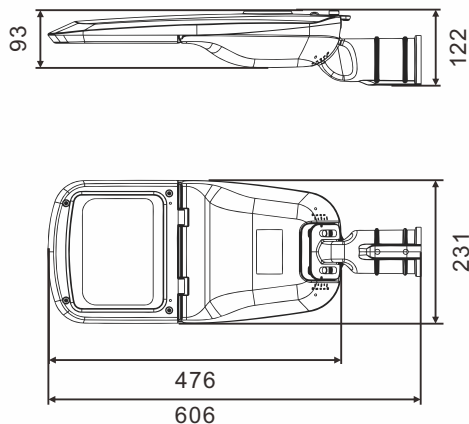


# Dialux

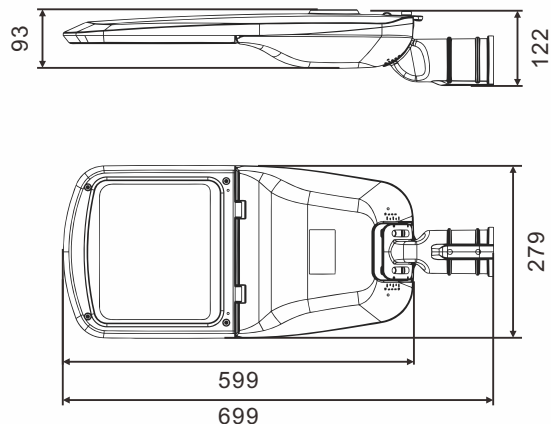


## Dimension(mm)

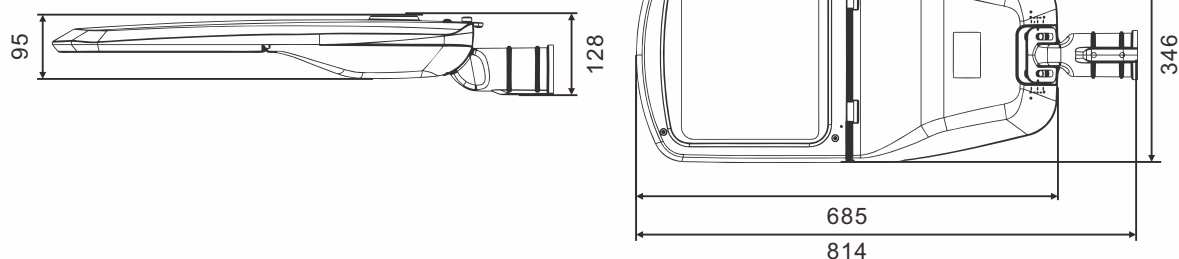
### 40W-60W



### 80W-120W

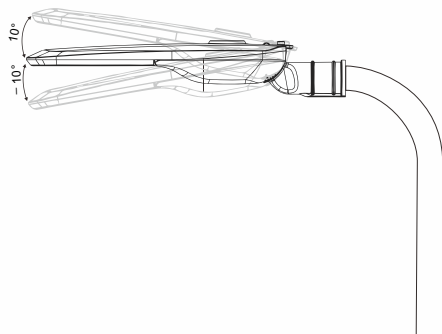


### 150W-220W

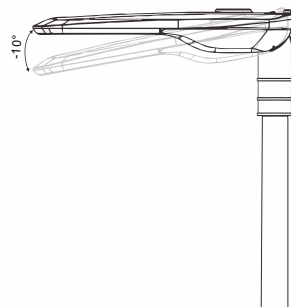


## Installation

### Horizontal installation



### Vertical installation



**-15°~+15° and -20°~+20° available on request.**



# Maintenance

## Power supply maintenance

- Cut off the power and open the backside cover;
- Remove the connectors of the power supply, and remove the screws;
- Take out the replacement parts;
- Retighten the replacement power supply, and connect the connector;
- Close the backside cover and fasten the lock;
- Maintenance completed.

